

Ophthalmology
Residency Match
Summary Report
2020



Association of University
Professors of Ophthalmology



sfmatch

Residency and Fellowship Matching Services

Positions Overview

	Jan 2011	Jan 2012	Jan 2013	Jan 2014	Jan 2015	Jan 2016	Jan 2017	Jan 2018	Jan 2019	Jan 2020
Offered	461	461	460	461	465	469	468	475	485	496
Filled	458	458	455	460	464	467	462	475	484	495
Left	3	3	5	1	1	2	6	0	1	1

2020 USMLE Data

Matched Mean	245
Matched Median	247
Matched 25th Percentile	239
Matched 75th Percentile	254
Unmatched Mean	233

Participating Applicants by Category

CATEGORY	Total #	% in Match
US Allopathic Seniors	498	78
US Allopathic Graduates	35	1
US Osteopathic Seniors	29	5
US Osteopathic Graduates	12	2
International Graduates	61	10
Total Match Participants	635	100

Ophthalmology Residency Match

Jan 2020

TOTAL APPLICANTS REGISTERED AND PARTICIPATED PER CATEGORY

	Registered #	Participated	Matched	Matched/ Participated (%)
US Allopathic Seniors	519	498	428	86
US Allopathic Graduates	48	35	18	51
US Osteopathic Seniors	37	29	16	55
US Osteopathic Graduates	20	12	4	33
International Applicants	113	61	29	48
TOTAL	737	635	495	78

Jan 2019

TOTAL APPLICANTS REGISTERED AND PARTICIPATED PER CATEGORY

	Registered #	Participated	Matched	Matched/ Participated (%)
US Allopathic Seniors	546	512	433	85
US Allopathic Graduates	51	31	16	52
US Osteopathic Seniors	54	42	16	38
US Osteopathic Graduates	10	3	2	67
International Applicants	129	61	17	28
TOTAL	790	649	484	75

Jan 2018

TOTAL APPLICANTS REGISTERED AND PARTICIPATED PER CATEGORY

	Registered #	Participated	Matched	Matched/ Participated (%)
US Allopathic Seniors	524	494	424	86
US Allopathic Graduates	47	34	22	65
US Osteopathic Seniors	37	28	10	36
US Osteopathic Graduates	9	5	2	40
International Applicants	118	64	17	27
TOTAL	735	625	475	76

MATCH APPLICANTS IN THE
2020 CYCLE

	Total #	% of Registrants Who Participated
Match Registrations	737	95%
CAS Participants	703	

MATCH APPLICANTS IN THE
2019 CYCLE

	Total #	% of Registrants Who Participated
Match Registrations	790	94 %
CAS Participants	740	

MATCH APPLICANTS IN THE
2018 CYCLE

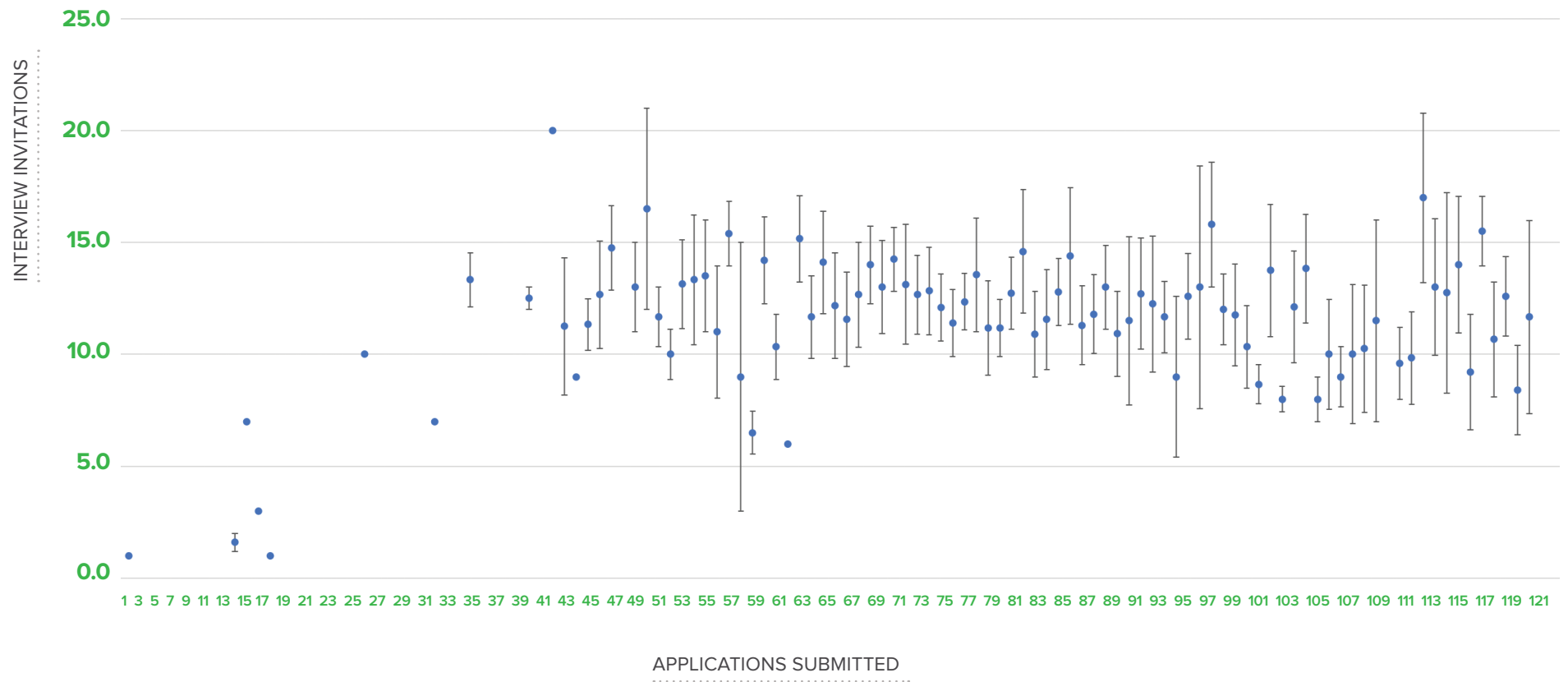
	Total #	% of Registrants Who Participated
Match Registrations	735	94 %
CAS Participants	689	

Application and Position Summary

	2018	2019	2020
AVG # APPLICATIONS PER MATCHED INDIVIDUAL	73	75	77
AVG # APPLICATIONS PER UNMATCHED INDIVIDUAL	69	71	77
AVG # INTERVIEW INVITES PER MATCHED INDIVIDUAL	12	12	12
AVG # INTERVIEW INVITES PER UNMATCHED INDIVIDUAL	4	4	4
TOTAL # POSITIONS OFFERED	475	485	496
TOTAL # POSITIONS FILLED	475	484	495
TOTAL NUMBER OF UNFILLED POSITIONS	0	1	1

Interview Invitations vs Number of Applications Submitted

Average number of interviews offered as a function of the number of applications distributed (with “standard error” bars calculated).



Overall Statistics

	Jan 2011	Jan 2012	Jan 2013	Jan 2014	Jan 2015	Jan 2016	Jan 2017	Jan 2018	Jan 2019	Jan 2020
Total # of registrations	823	784	751	757	808	795	702	735	790	737
Total # of CAS participants	746	711	683	700	753	726	660	689	740	703
Total # of rank lists	622	595	583	611	644	634	594	625	649	635
Total # of applicants ranked	608	579	553	597	614	624	578	607	635	617

MATCHED APPLICANTS

US Seniors	405	411	402	419	413	429	423	434	449	444
US Grads	26	26	33	23	34	25	19	24	18	22
IMGs	27	21	20	18	17	13	20	17	17	29
Total Matched	458	458	455	460	464	467	462	475	484	495
Unmatched applicants	164	137	128	151	180	167	132	150	165	140

PERCENT MATCHING

Overall	74%	77%	78%	75%	72%	74%	78%	76%	75%	78%
US Seniors	88%	90%	89%	91%	89%	92%	92%	91%	93%	90%
US Grads	6%	6%	7%	5%	7%	5%	4%	5%	4%	4%
IMGs	6%	4%	4%	4%	4%	3%	4%	4%	3%	6%

POSITIONS

Offered	461	461	460	461	465	469	468	475	485	496
Filled	458	458	455	460	464	467	462	475	484	495
Left	3	3	5	1	1	2	6	0	1	1

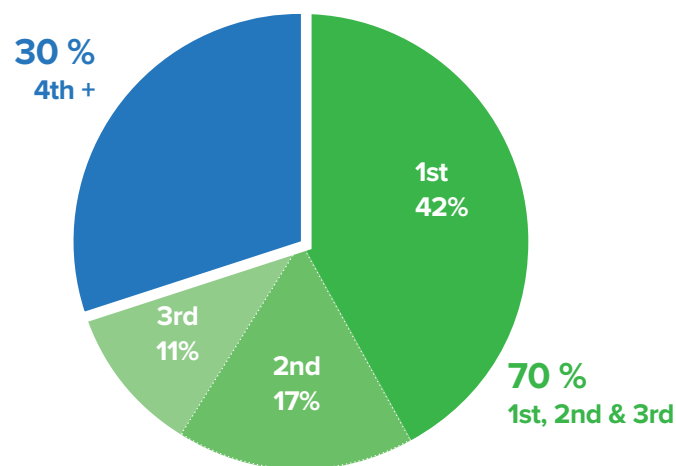
USMLE Step 1 Scores Information

	Jan 2011	Jan 2012	Jan 2013	Jan 2014	Jan 2015	Jan 2016	Jan 2017	Jan 2018	Jan 2019	Jan 2020
Matched	237	238	239	242	243	244	243	245	244	245
Unmatched	214	220	222	226	228	229	227	228	231	233
Avg. applications per applicant	52	53	58	60	61	68	68	70	75	77

Rank Analysis for Applicants

2020 Ranking Results by Matched Applicants

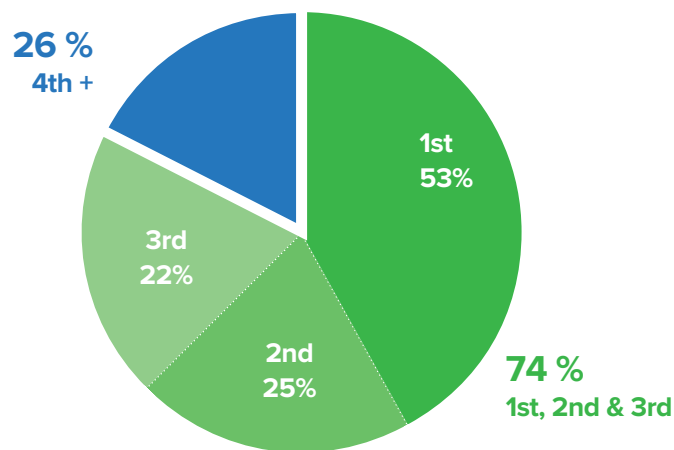
1ST CHOICE	205
2ND CHOICE	85
3RD CHOICE	55
4TH CHOICE	60
5TH CHOICE	26
6TH CHOICE	22
7TH CHOICE	9
8TH CHOICE	9
9TH CHOICE	8
10TH + CHOICE	16
TOTAL	495



Continued

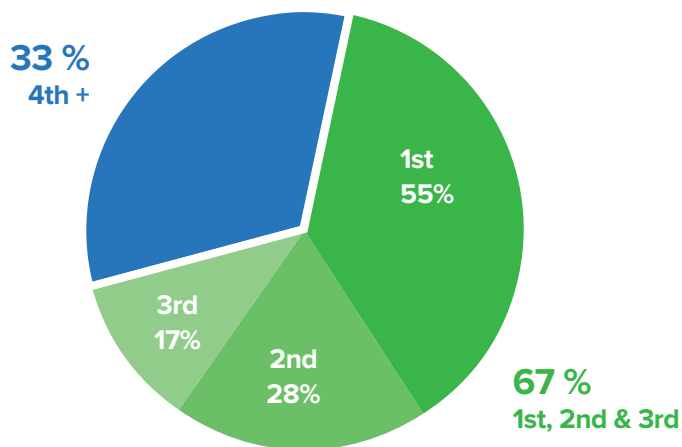
2019 Ranking Results by Matched Applicants

1ST CHOICE	189
2ND CHOICE	90
3RD CHOICE	78
4TH CHOICE	44
5TH CHOICE	32
6TH CHOICE	18
7TH CHOICE	7
8TH CHOICE	10
9TH CHOICE	9
10TH + CHOICE	7
TOTAL	484



2018 Ranking Results by Matched Applicants

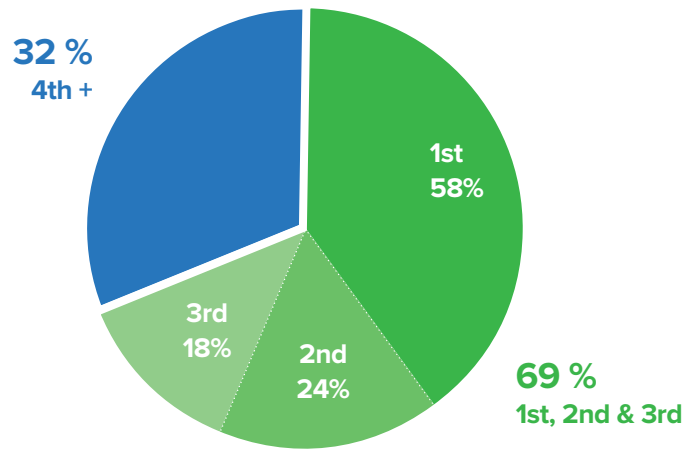
1ST CHOICE	176
2ND CHOICE	90
3RD CHOICE	54
4TH CHOICE	50
5TH CHOICE	33
6TH CHOICE	33
7TH CHOICE	13
8TH CHOICE	12
9TH CHOICE	5
10TH + CHOICE	9
TOTAL	475



Continued

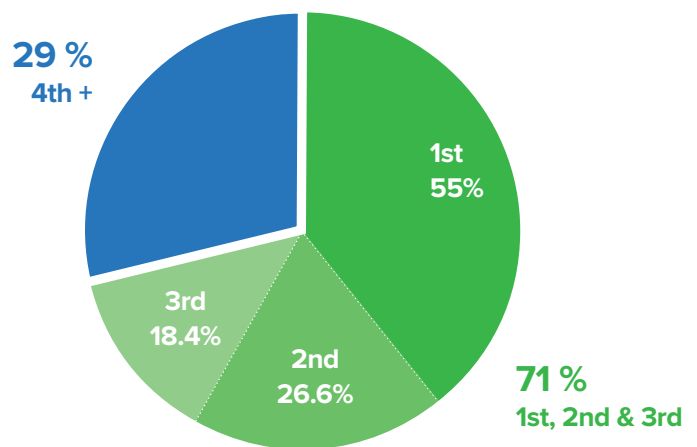
2017 Ranking Results by Matched Applicants

1ST CHOICE	186
2ND CHOICE	78
3RD CHOICE	56
4TH CHOICE	44
5TH CHOICE	33
6TH CHOICE	26
7TH CHOICE	17
8TH CHOICE	12
9TH CHOICE	5
10TH + CHOICE	5
TOTAL	462



2016 Ranking Results by Matched Applicants

1ST CHOICE	182
2ND CHOICE	88
3RD CHOICE	61
4TH CHOICE	46
5TH CHOICE	33
6TH CHOICE	12
7TH CHOICE	14
8TH CHOICE	10
9TH CHOICE	9
10TH + CHOICE	12
TOTAL	467



Association of University
Professors of Ophthalmology



sfmatch

Residency and Fellowship Matching Services

Association of University Professors of Ophthalmology
SFMatch

655 Beach Street, San Francisco CA 94109

www.sfmatch.org

Phone: 415.447.0350

Fax: 415.561.8535